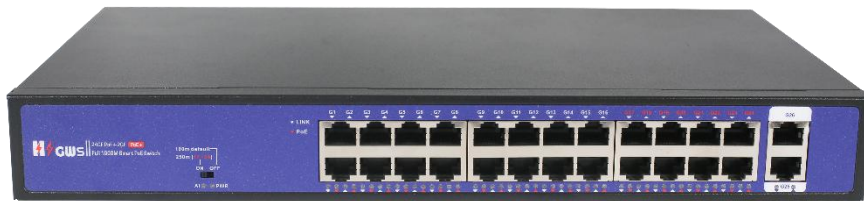


Product Datasheet

26-port Full Gigabit PoE Switch

(GWS-3024PSD)



Overview

The GWS-3024PSD is an unmanaged PoE switch. It has 24*10/100/1000Base-TX PoE ports, 2*10/100/1000Base-T uplink RJ45 ports. Port 1-24 can support IEEE802.3af/at PoE standard. Single-port PoE power up to 30W. As a PoE power supply device, it can automatically detect and recognize the power receiving equipment that meets the standard and supply power through the network cable. It can supply power to POE terminal equipment such as wireless AP, webcam, VoIP phone, video access control intercom, etc. through a network cable to meet the network environment that needs a high-density PoE power supply. It is suitable for hotels, campuses, factory quarters, and small and medium-sized enterprises to form an economy efficient network.

Unmanaged mode, plug and play, no configuration, easy to use.

Feature

■ Full gigabit access, Gigabit dual RJ45 ports uplink

- ◇ Support non-blocking wire-speed forwarding for smoother transmission.
- ◇ Support IEEE 802.3x full-duplex flow control and Backpressure half-duplex flow control.
- ◇ Provide Ethernet ports and Gigabit RJ45 ports uplink for flexible networking and meets the networking requirements of various scenarios.

■ Intelligent PoE power supply

- ◇ 24*10/100/1000Base-TX RJ45 ports support PoE power to meet the needs of PoE power in various scenarios in the security field.
- ◇ Comply with PoE+ power standard, automatically identify PoE devices for power without damaging non-PoE devices, and the single port max PoE output power is 30W.

■ Stable and reliable, easy to use

- ◇ CCC,CE, FCC, RoHS.
- ◇ Plug and play, no configuration, simple and convenient.
- ◇ Low power consumption, galvanized steel casing, no fan.
- ◇ The user-friendly panel can show the device status through the LED indicator of PWR, Link, PoE.
- ◇ Self-developed power supply, high redundancy design, providing a long term and stable PoE power output.

■ Innovative function

- ◇ **PoE watchdog:** The watchdog function is enabled by default for ports 1 to 24, which can automatically detect the data communication status in real-time. When the port communication fails, the corresponding port POE will automatically restart, and the network communication can be repaired by itself, eliminating manual maintenance costs.
- ◇ **Long-distance mode (E):** switch to "ON" position (default "OFF"), the port 17 to 24 rate is

10M, and the PoE watchdog function is turned on at the same time to monitor and automatically restart the communication failure PoE port. Using the existing twisted pair can break through the 100 meters transmission limit, and the transmission distance can be up to 250 meters. At the same time, it can solve the problem of poor transmission caused by aging lines.

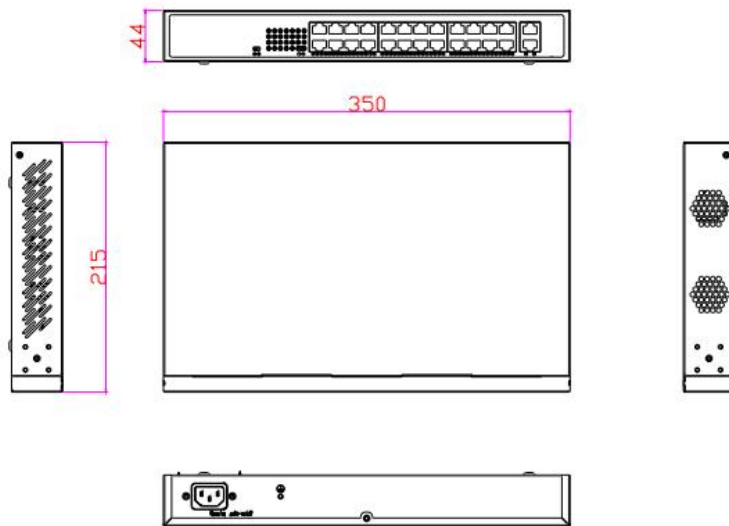
Technical Specification

| Model | GWS-3016PSD | GWS-3024PSD |
|------------------------------|--|---|
| Interface Characteristics | | |
| Fixed Port | 16*10/100/1000Base-TX PoE ports (Data/Power) | 24*10/100/1000Base-TX PoE ports (Data/Power) |
| | 2*10/100/1000Base-T uplink RJ45 ports (Data) | 2*10/100/1000Base-T uplink RJ45 ports (Data) |
| Ethernet Port | Port 1-16/1-24 can support 10/100/1000Base-T(X) and 17-18/25-26 can support 100/1000Base-T(X) automatic detection, full/half-duplex MDI/MDI-X auto-sensing | |
| Twisted Pair Transmission | 10BASE-T: Cat3,4,5 UTP(≤250 meter) 100BASE-TX: Cat5 or later UTP(≤100 meter) 1000BASE-T: Cat5e or later UTP(≤100 meter) | |
| Functional Switch | E: long-distance function (Default: OFF, Use:ON), After opening, ports 9-16/17-24 support 10M/250m long distance + POE watchdog | |
| Chip Parameter | | |
| Network Protocol | IEEE802.3 10BASE-T, IEEE802.3i 10Base-T IEEE802.3u 100Base-TX, IEEE802.3ab 1000Base-T,IEEE802.3z 1000Base-X,IEEE802.3x | |
| Forwarding Mode | Store and Forward(Full Wire Speed) | |

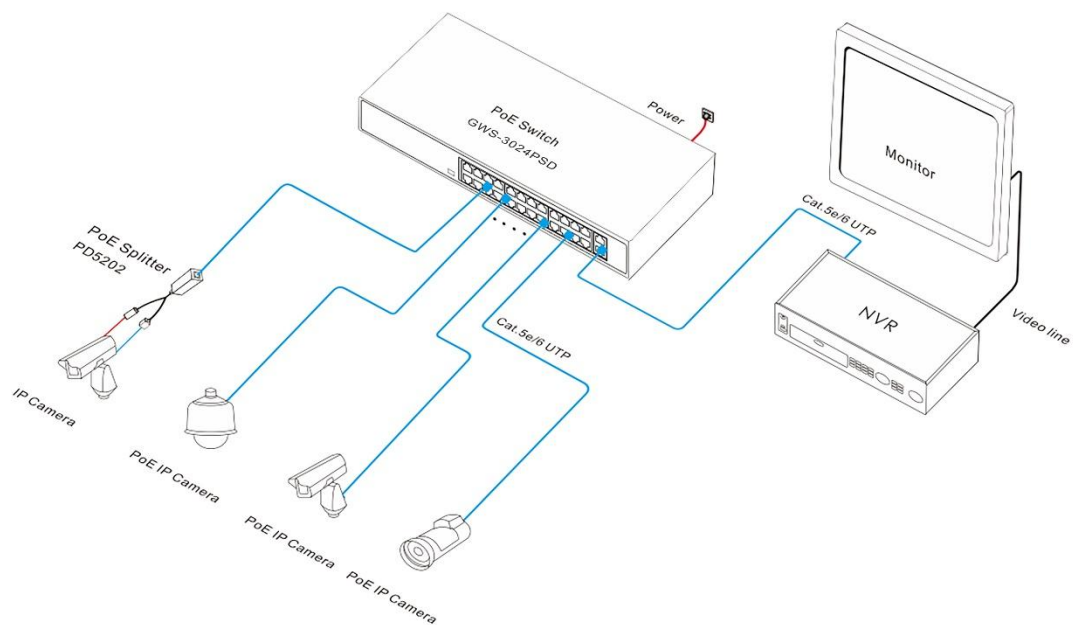
| | | |
|---------------------------|--|--|
| Switching Capacity | 36Gbps (Non-blocking) | 52Gbps (Non-blocking) |
| Forwarding Rate@64byte | 26.78Mpps | 38.69Mpps |
| MAC | 16K | 16K |
| Buffer Memory | 4M | |
| Jumbo Frame | 10K | |
| LED Indicator | Power: PWR (Green), Network: Link (Green), PoE: PoE (Red), Functional switch: EXTEND (Green) | |
| PoE & Power Supply | | |
| PoE Port | Port 1 to 16 @ IEEE802.3af/at | Port 1 to 24 @ IEEE802.3af/at |
| Power Supply Pin | 1/2(+) 3/6(-) | |
| Max Power Per Port | 30W, IEEE802.3af/at | |
| Total PWR / Input Voltage | 160W/ (AC100-240V) | 250W/ (AC100-240V) |
| Power Consumption | Standby <5W, Full load <160W | Standby <5W, Full load <250W |
| Power Supply | Built-in power supply, AC100~240V 50-60Hz 3A | Built-in power supply, AC100~240V 50-60Hz 4.8A |
| Physical Parameter | | |
| Operation TEMP / Humidity | -20~+55°C, 5%~90% RH Non condensing | |
| Storage TEMP / Humidity | -40~+75°C, 5%~95% RH Non condensing | |
| Dimension (L*W*H) | 350*215*44mm | 350*215*44mm |
| Net /Gross Weight | <1.75kg / <2.2kg | <2.0kg / <2.5kg |
| Installation | Desktop, Rack-mounted | |
| Certification & Warranty | | |
| Lightning Protection | Lightning protection: 4KV 8/20us, Protection level: IP30 | |
| Certification | CCC, CE mark, commercial, CE/LVD EN62368-1, FCC Part 15 Class B, | |

| | |
|----------|-------------------------------|
| | RoHS |
| Warranty | 1 year, lifelong maintenance. |

Dimension



Application



Ordering Information

| Model | Description | Power Supply |
|-----------------|---|--------------|
| GWS-3016PS D | Unmanaged PoE switch with 16*10/100/1000M PoE ports, 2*10/100/1000M Base-T uplink RJ45 ports. Port 1-16 can support IEEE802.3af/at PoE standard, switch the functional switch, ports 9-16 rate is 10M/250 meters transmission and built-in power supply. | 52V/160W |
| GWS-3024PS D | Unmanaged PoE switch with 24*10/100/1000M PoE ports, 2*10/100/1000M Base-T uplink RJ45 ports. Port 1-24 can support IEEE802.3af/at PoE standard, switch the functional switch, ports 17-24 rate is 10M/250 meters transmission and built-in power supply. | 52V/250W |

Packing List

| | CONTENT | QTY | UNIT |
|--------------|---------------------------------|-----|------|
| Packing List | 26-port Full Gigabit PoE Switch | 1 | SET |
| | AC Power Line | 1 | PC |
| | User Guide | 1 | PC |
| | Warranty Card | 1 | PC |
| | | | |

Contact Us



Tel: 0086-752-3397806

WeChat: HZGWS--PoE

Email: hzgws@hzgws.com

Skype: [hzgws@hzgws.com](https://www.skype.com/people/hzgws@hzgws.com)

Website: www.hzgws.com

Address: Building 3, Phase II, Xinghe Artificial Intelligence Industrial Park, No.333 Zhongkai 6th Road, Chenjiang Street, Zhongkai High-tech Zone, Huizhou

